

# JAMES PRECISION ENGINEERING PTE LTD

27 Woodlands Industrial Park E1, #02-06 Hiangkie Industrial Building IV, Singapore 757718  
 Tel: (65)63673787 Fax: (65)63664428 web: www.cmm.com.sg  
 E-mail: jamespl@singnet.com.sg



## Used PcMM Plus - DCC

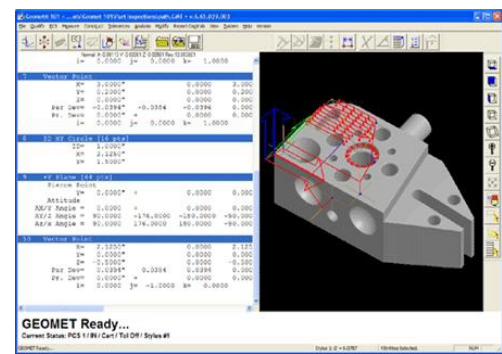
Although this used CMM was previously owned, it has been completely over-hauled & upgraded by Helmel Engineer USA. Our rebuild program installed new DCC electronics, motion controller and joystick plus the latest computer system with Geomet software. This CMM has been completely inspected and calibrated at our office.



Measuring Range: X= 20" (500 mm)  
 Y= 30" (750 mm)  
 Z= 16" (400mm)  
 Resolution: 0.001mm  
 Linear Accuracy: 4.5 µm + L/150 µm (L in mm)  
 Volumetric Accuracy: 0.011 µm per ANSI B89.1.12-1998

### Machine Configuration:

- Granite worktable
- Precision bearings
- Non-contact Linear Motors
- Hardened and ground ways
- Electronic touch probe interface
- Pentium computer system
- Geomet 101/301 user guide
- Geomet 301 DCC software
- 3/8"-16 Clamping inserts
- USB computer interface connection
- Delta Tau Motion Controller
- Custom key labels
- Calibration sphere



### Renishaw TP-ES Probe Kit:

- |                                    |    |
|------------------------------------|----|
| Renishaw TP-ES Vertical probe head | 1X |
| Ø 1mm L=20mm, Ball Styli           | 1X |
| Ø 2mm L=20mm, Ball Styli           | 1X |
| Ø 3mm L=20mm, Ball Styli           | 1X |
| 5-Way stylus centre                | 1X |
| 20mm Stylus Extension              | 1X |



**Setup & Training:** Our engineer will setup & Calibrate the machine on-site.  
 Two (2) days Geomet 301 DCC application training for maximum of 3 people.

**Warranty:** 6 months on new retrofitted Electronics Controller system, Joystick & software.

**Used Machine Price = \$33,800.00**

# JAMES PRECISION ENGINEERING PTE LTD

27 Woodlands Industrial Park E1, #02-06 Hiangkie Industrial Building IV, Singapore 757718  
Tel: (65)63673787 Fax: (65)63664428 web: www.cmm.com.sg  
E-mail: jamespl@singnet.com.sg

